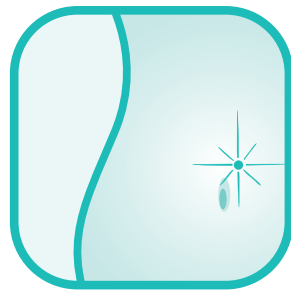


medisept.[®]
Professional Piercing Systems

Disposable Cartridge
NAVEL Piercing System



Operators Manual

A

Operators Manual

Medisept® Disposable Cartridge Navel Piercing System



Innovative. Safe. Professional.

Thank you for purchasing the Medisept® Disposable Cartridge Navel Piercing System. Our engineers have designed the Medisept® Navel Piercing System to provide piercing technicians and retailers with an easier and safer alternative to navel piercing with a needle. The Medisept® Navel Piercing System allows you to pierce safely without the need for an autoclave steriliser. The patented design of the Medisept® navel piercing instrument safely pierces the navel using individually sterilised jewellery and clamps. The sealed cartridges contain one complete sterilised navel piercing bar or one single use sterilised clamp. All navel bars are constructed in 316L surgical stainless steel featuring genuine Swarovski® crystals. The patented instrument design gently pierces the navel in one easy action. Once completed, the navel bar can be worn safely and comfortably every day.

Sterilised
Disposable Cartridge
with Navel Piercing
Jewellery



Reusable
Instrument
Handle

Jewelled Ball Applicator



Sterilised Disposable Clamp

Operators Manual

Medisept® Disposable Cartridge Navel Piercing System



Table of Contents:

Navel Piercing System Instrument	3
Clamp	3
Cartridge	3
Preparation	4
Hand Washing	4
Cleaning the Instrument	4
Loading the Instrument	5
Navel Piercing Procedure	6
Cleansing	6
Marking the Navel	6
Clamping the Navel	6
Piercing the Navel	7
After Piercing Care	8
Troubleshooting*	9
Instrument Guarantee	10

*(review this chapter before piercing)

Operators Manual

Medisept® Disposable Cartridge Navel Piercing System



Instrument

The ergonomic contoured grip is designed to fit hands of all sizes. The smooth linear action of the instrument helps promote precise, accurate piercing. (fig.1)

The patented shape of the instrument accurately pierces the navel using individually sterilised cartridges eliminating the need for piercing needles and free-hand piercing methods.

The cartridge channel allows for easy touch free loading and disposal of the sterilised piercing cartridge.



(fig.1)

Clamp

Each clamp is individually sterilised for safety. The disposable clamp is designed to be pain-LESS due to its flexibility and simple locking mechanism. (fig.2)

The back end of the Clamp is a Marking Template with two dots and a line. This will help to ensure precise marking every time.

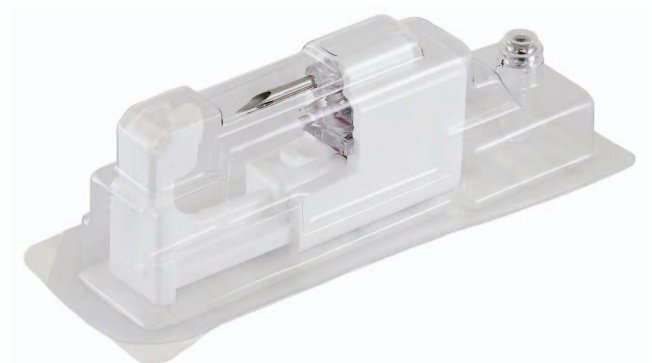


(fig.2)

Cartridge

Each cartridge is individually sterilised for safety and is designed to deliver safe, virtually pain-free navel piercing. All jewellery is manufactured from high quality 316L stainless steel.

Each cartridge is contained in a unique blister package enabling the user to safely load and dispose of the cartridge without touching the cartridge or jewellery. (fig. 3)



(fig. 3)

Operators Manual

Medisept® Disposable Cartridge Navel Piercing System



Preparation

1. Use an anti-bacterial/germicidal wipe or solution to clean the work surface. Place a clean paper cloth on the surface.
2. Have the customer select the Medisept® navel piercing jewellery of their choice.
3. On your clean work surface, arrange the piercing instrument, pre-sterilised Medisept® Navel Piercer cartridge, disposable clamp, disposable gloves, alcohol prep pad, Medisept® marking pen, hand held mirror and Medisept® after piercing care gel. (fig. 4)
4. With your customer, review the Medisept® navel piercing release and after care procedure form. Have the customer sign and date both portions of the form BEFORE performing the navel piercing service.
5. Hand your customer the Medisept® mirror for the duration of the piercing service.
6. Ask your customer to lay flat on the piercing bed with their arms straight against their sides.



(fig. 4)

Hand Washing

1. Using antibacterial/germicidal hand soap, wash and rinse hands thoroughly. Avoid touching the faucet/tap handles and nozzle if possible when turning the water on and off. Dry your hands thoroughly. If a sink and water are not available, use an alcohol based waterless hand sanitiser to cleanse hands thoroughly before piercing.
2. After drying your hands, immediately put your disposable gloves on each hand before proceeding with the piercing service.

Cleaning the Instrument

It is essential to clean the Medisept® navel piercing instrument before and after each use.

1. With gloved hands, clean the entire instrument.
2. Use a 70% Isopropal Alcohol wipe when cleaning the instrument. Do not wash or immerse in water! (fig. 5)



(fig. 5)

Operators Manual

Medisept® Disposable Cartridge Navel Piercing System



Loading the Instrument

1. Take the Medisept® sterilised cartridge and gently remove the protective backing (fig. 6) from the blister package. Remove the clear jewelled ball applicator and set it on the clean work surface. Set both the blister and cartridge down on the work surface.
*Do not remove the cartridge from the blister package.

2. Open the clamp blister package and place on the work surface.

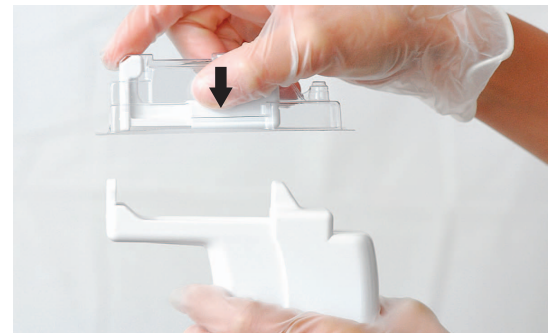
3. Take the Medisept® navel piercing instrument and hold it over the clean work surface. With the other hand hold the blister package between your thumb and forefinger and place it on top of the instrument. (fig. 7)

4. Insert the cartridge starting with the front of the instrument first then proceed by snapping the cartridge level into the instrument. Ensure the needle tip is facing forward. (fig. 8)

5. Do not discard the blister package, set it down on the clean work surface for use during the disposal of the used cartridge. (fig. 9)



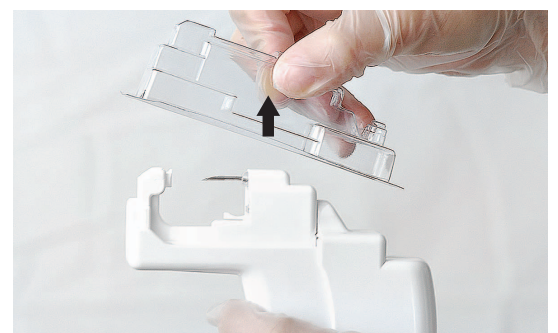
(fig. 6)



(fig. 7)



(fig. 8)



(fig. 9)



Navel Piercing Procedure

Preparation

1. Check the area for any skin irritations or scar tissue as these could require special care when piercing. Do not pierce through any cysts or moles as these could be harmful.
2. Using the Medisept® alcohol prep pad, gently clean the surface of the navel in a circular motion. Cleanse the inside of the navel and then the outside area. (fig. 10)



(fig. 10)

Marking the Navel

1. Before marking, ensure the area in and around the navel is completely dry after cleansing.
2. Gently squeeze the navel together vertically (fig. 11) to locate the centre line of the navel.
3. Place your thumb and fore finger on the navel area and gently open them creating a lip. (fig. 12)
4. Take the Medisept® pre-sterilised clamp and use the reverse end as a guide to mark the piercing area. (fig. 13) Insert the reverse end onto the navel and gently mark the top dot and bottom dot then the horizontal line. The bottom dot should sit directly on the lip of the navel. The dots represent the entry and exit of the navel jewellery. (fig. 14)



(fig. 11)



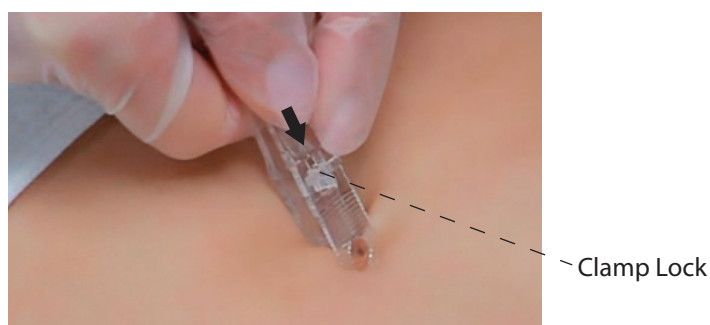
(fig. 12)

Clamping the Navel

1. Hold the clamp, locking device face up and place the base directly under the bottom dot. Roll the top dot into the middle of the top clamp hole and squeeze the clamp together firmly. Move the locking device forward to lock the clamp. (fig. 15)
2. Ensure that the top and bottom dots are exactly in the middle of the clamp holes.



(fig. 13)



(fig. 15)



(fig. 14)



Piercing the Navel

1. With the instrument loaded, stand at the side of the customer to pierce from the bottom of the navel upwards towards their head. If you are right handed it is best to stand on the RIGHT side of the customer. If you are left handed, stand on the LEFT side.
2. Gently hold the clamp vertically and insert the front of the piercing instrument (with your hand on the top) into the front clamp hole while holding it flat against the navel. (fig. 16)
3. Gently squeeze the handle so the needle tip is perfectly aligned with the dots. Once aligned, ensure that the needle is straight and squeeze the instrument handle firmly and evenly to a full stop. Hold this position for 2 seconds. (fig. 17)
4. Release the handle, the cartridge will automatically disengage from the navel piercing jewellery. Slide the instrument off the cartridge. Set the instrument down, unscrew the piercing needle receiver and discard in the appropriate manner. (fig. 18)
5. Take the small jewelled ball applicator and screw it clockwise onto the jewellery thread. Remove the applicator and discard. (fig. 19)
6. Release the clamp from the navel by pulling the locking bar up.



(fig. 16)



(fig. 17)



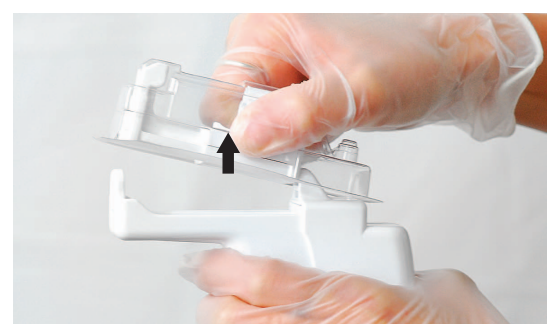
(fig. 18)

Removing the Cartridge from the instrument

1. Take the empty blister package and place on top of the used cartridge while still in the instrument. (fig. 20)
2. With your thumb and index fingers, pinch firmly both sides of the cartridge.
3. Gently squeeze the handle to partially compress the instrument. Slide the cartridge forward while lifting it off and dispose of both the cartridge and blister into an approved receptacle.



(fig. 19)



(fig. 20)

Operators Manual

Medisept® Disposable Cartridge Navel Piercing System



Aftercare

1. Cleanse the navel area thoroughly using genuine Medisept® piercing care gel, removing any marks left from the non toxic marking pen. (fig. 21)
2. Apply a drop at each end of the piercing. This will work the gel into the piercing as the customer moves around. (fig. 22)
3. Ensure that the customer is OK to stand up.
4. Give the aftercare instructions to your customer and suggest that they use Medisept® after piercing care gel as part of their aftercare regime. (fig. 23)



(fig. 21)



(fig. 22)



(fig. 23)

MediSept® After Piercing Care Gel
20g

Operators Manual

Medisept® Disposable Cartridge Navel Piercing System



Troubleshooting

The best way to be prepared for any issue that may occur during a Navel piercing is to familiarise yourself with the Medisept® Navel piercing system, the procedure & the *Troubleshooting section prior to piercing. Remember that you are the professional, so you must always remain calm. Always advise the customer not to worry as you will have the issue resolved in a moment.

In a normal procedure the needle tip will engage into the needle receiver and when the handle is released the needle tip will remain inside the receiver which will then be unscrewed and the ball attached. If the handle is not fully squeezed to the end then the needle tip may not engage into the needle receiver when the handle is released.

In this situation:

- Ensure that the needle tip has completely pierced the Navel. If not then you will need to push the needle just past the clamp.
- Carefully unscrew the needle tip ensuring not to prick your gloved finger. Place the needle tip in the sharps container.
- Screw on the top ball using the ball applicator. Use the Medisept® antiseptic gel as normal on the piercing site.
- In a normal procedure the needle tip will completely pierce through the navel & clamp & you will see the navel bar thread protruding.
- If the handle is not fully squeezed to the end then the needle tip can engage into the needle receiver but the navel is not completely pierced.

In this situation:

- Hold the navel bar bottom ball with your thumb & forefinger and gently push until the back end of the needle is visible.
- Unscrew the needle tip in the normal manner and screw on the top ball using the ball applicator. Use the Medisept® antiseptic gel as normal on the piercing site.
- If you drop the navel bar or clamp on the floor you must NOT re use it. Always use a new sterilised navel bar or clamp.
- If a customer faints or feels faint it is usually because of the person's general health, well being or anxiety. Not the piercing!

To prevent or decrease the likelihood of fainting you should:

- Ask the customer if they have eaten within the last hour. If not suggest they have a sugary drink, juice or small snack.
- Have the customer remove any bulky coats or sweaters.
- Engage the customer in conversation to keep them preoccupied.
- Work quickly & confidently.
- Allow them to lay or sit down for a few minutes or until they feel OK & they are up to walking.

If fainting should occur, do the following:

- Ensure the customer remains calm & flat on the piercing bed. Put the customer in the recovery position or elevate their legs if possible.
- Always be very attentive to the customer so they do not fall off the bed or bump their head. Do **NOT** leave them unattended.
- Offer a glass of water, sugary drink or sugar sweet.

If bleeding should occur, do the following:

- Use an absorbent cloth and hold down firmly on the piercing site and navel bar.
- If for any reason a navel bar needs to be removed from a new piercing you must ensure that the Medisept® antiseptic gel is liberally used on the open piercing. Clean hands & gloves must be worn for this process.
- Any navel bars or clamps that are opened & not used must NOT be used for an initial piercing.

For any irregularities the customer must always consult their doctor before piercing!

Operators Manual

Medisept® Disposable Cartridge Navel Piercing System



Lifetime Guarantee

The Medisept® Navel Piercing Instrument is backed by a limited lifetime guarantee to the original purchaser. This instrument is made in the U.S.A. and created using the highest quality materials and workmanship. Each Medisept® Navel Piercing System component is subject to rigorous quality and safety standards regulated by the USFDA (food and drug administration) and EC (European Commission).

Visit www.mediseptaustralia.com

This guarantee is void if the instrument is misused or dropped, or is used with anything other than genuine Medisept® piercing products.

www.mediseptaustralia.com

Copyright notice

This manual and its content is copyright of MediSept - © 2011. All rights reserved.

Any redistribution or reproduction of part or all of the contents in any form is prohibited other than the following:

- you may print or download to a local hard disk extracts for your personal and non-commercial use only

- you may copy the content to individual third parties for their personal use, but only if you acknowledge the company name and website (www.medisept.com) as the source of the material

You may not, except with our express written permission, distribute or commercially exploit the content. Nor may you transmit it or store it in any other website or other form of electronic retrieval system.