



After Piercing Care





A/. Navel Piercing Care Instructions.

- Always wash hands thoroughly prior to cleaning or touching the piercing.
- Use the gentle Medisept after care gel for a new navel piercing two to three times per day.
- After showering dry the piercing with a disposable single use paper towel or tissue.
- Do not use cloth towels as these may not be 100% clean.
- Avoid swimming in pools, lakes or spas. If necessary, protect the piercing with a waterproof bandage.
- Keep all lotions, perfumed sprays, makeup and harsh cleaning products away from the newly pierced area.
- Do not remove or change the jewellery for 6 to 12 months or until completely healed.
- Continuously wearing the jewellery will prevent the piercing from closing.

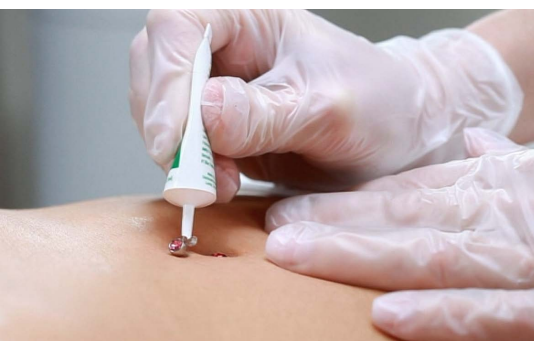
After Piercing Care.

1/. Always wash hands before application.

2/. Squeeze a small drop onto the top and bottom of the piercing and jewellery.

3/. The gel will work into the piercing with body movement or gently move the jewellery back and forth to help the gel to get into the centre of the piercing.

4/. If excessive redness or irritation occur, discontinue use and consult a doctor.



MediSept® After Piercing Care Gel
20g



B/. Nose Piercing Care Instructions.

- Always wash hands thoroughly prior to cleaning or touching the piercing.
- Use the gentle Medisept after care solution for a new nose piercing two to three times per day.
- After showering dry the piercing with a disposable single use paper towel or tissue.
- Do not use cloth towels as these may not be 100% clean.
- Avoid swimming in pools, lakes or spas. If necessary, protect the piercing with a waterproof bandage.
- Keep all lotions, perfumed sprays, makeup and harsh cleaning products away from the newly pierced area.
- Do not remove or change the jewellery for 10 to 12 weeks or until completely healed.
- Continuously wearing the jewellery will prevent the piercing from closing.
Do not leave your nose piercing without a nose stud for more than 24 hours.
- Take extra care when putting clothing over your head as the nose stud could catch.

After Piercing Care.

1/. Always wash hands before application.

2/. Squeeze a small drop of solution onto the outside of the nose piercing and jewellery.

3/. Gently move the jewellery back and forth to help the solution to get into the centre of the piercing.

4/. If excessive redness or irritation occur, discontinue use and consult a doctor.



C/. Infections

Navel Piercing Normal Healing Signs:

- It is normal to feel tenderness or discomfort in the area of the new piercing.
- Any pain or redness should disappear after a few days.
- Secretion of a white- yellowish fluid that can form a crust at the opening of the piercing is an indication that the piercing is healing.

Navel Piercing Signs of Infection:

- Discharge of yellow or green pus, recurrent redness, inflammation, swelling or bleeding may indicate that the body may not tolerate a foreign object in the skin.
- This condition could indicate an allergic reaction or infection.
- Consult a doctor immediately.

Nose Piercing Normal Healing Signs:

- It is normal to feel tenderness or discomfort in the area of the new piercing.
- Any pain or redness should disappear after a few days.
- Secretion of a white- yellowish fluid that can form a crust at the opening of the piercing is an indication that the piercing is healing.

Nose Piercing Signs of Infection:

- Discharge of yellow or green pus, recurrent redness, inflammation, swelling or bleeding may indicate that the body may not tolerate a foreign object in the skin.
- This condition could indicate an allergic reaction or infection.
- Consult a doctor immediately.